



## BEAUTIFUL HIGH STANDING NEW FURNISHED STUDIO

Route Cantonale 19 | 1025 St-Sulpice VD | Reference : 3150-10

**CHF 2,884.-/month + ch.**

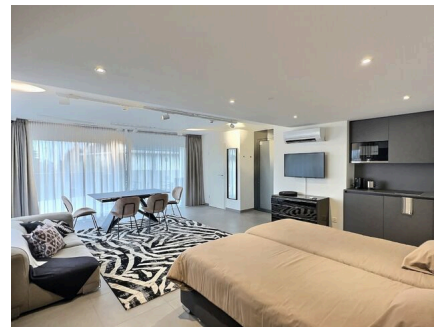


## TABLE OF CONTENTS

Description page	3
Page location and distances	5
Detailed characteristics and conveniences	6
Big pictures	8

## BEAUTIFUL HIGH STANDING NEW FURNISHED STUDIO

CH-1025 St-Sulpice VD | Route Cantonale 19 | **CHF 2,884.-/month + ch.**



### To rent:

Very large and magnificent high-standard furnished studio lounge (1.5 rooms) for rent in a new building facing EPFL, offering full comfort, peace, security, and modern technology, with a large private south-facing terrace and lake view. The apartment: king-size double bed – fully equipped kitchen, large extendable dining/desk table, wardrobes, TV, sofa bed, shower room, private cellar. The apartment is fully furnished and equipped with bed linens and towels.

Monthly rent: CHF 2,884.-/month + fixed monthly charges CHF 230.- (hot water, heating, electricity, ultra-fast individual Wi-Fi).  
Total rent: CHF 3'114.-/month all charges included.

Parking spaces available. Price for residents: CHF 120.-/month (outdoor) // CHF 200.-/month (indoor).

### For rent:

Very large and beautiful furnished 1.5-room lounge studio for rent in a new building opposite the EPFL, with all comforts, quiet, security, technology, very large private terrace and full south-facing lake view.

The apartment: king size double bed – 1 fully equipped kitchen, large extendable desk-table, cupboards, TV, 1 sofa bed, shower room, 1 cellar. The apartment is fully furnished and equipped with bedding (bed + towels).

### Monthly rental

price: CHF 2'884.-/month + charges package 230.-/month (hot water, heating, electricity, individual ultra-fast Wi-Fi).

Monthly rent: CHF 3,114.- including charges.

### CHARACTERISTICS

Reference: **3150-10**

Type: **Apartment**

Availability: **To agree**

Rooms: **1.5**

Bedroom: **1**

Bathroom: **1**

Location floor: **Upper ground floor**

Charges: **CHF 230.-/month (Not included)**

Parking spaces: **Yes, optional**





Parking

spaces available. Price for residents: CHF 120.-/month (outdoor space) // CHF 200.-/month (indoor space).

**CONTACT FOR VISITING**





E-mail : [info@segurimmo.ch](mailto:info@segurimmo.ch)

Tel. : 021/311.53.23

## LOCATION

CH-1025 St-Sulpice VD | Route Cantonale 19 | **CHF 2,884.-/month + ch.**



				
Public transports	47 m	-	-	3 min.
Secondary II school	10 m	7 min.	7 min.	4 min.
Stores	830 m	16 min.	12 min.	6 min.

## CHARACTERISTICS

CH-1025 St-Sulpice VD | Route Cantonale 19 | **CHF 2,884.-/month + ch.**

### CHARACTERISTICS

Availability	<b>To agree</b>	Location floor	<b>Upper ground floor</b>
Type	<b>Apartment</b>	Charges	<b>CHF 230.-/month (Not included)</b>
Reference	<b>3150-10</b>	Parking spaces	<b>Yes, optional</b>
Rooms	<b>1.5</b>	Interior parking	<b>1 not included   CHF 200.-</b>
Bedroom	<b>1</b>	Exterior parking	<b>1 not included   CHF 120.-</b>
Bathroom	<b>1</b>		

### CONVENIENCES

#### NEIGHBOURHOOD

- Lake
- Bus stop
- College / University

#### OUTSIDE CONVENIENCES

- Terrace/s

#### INSIDE CONVENIENCES

- Lift/elevator
- Private bathroom
- Built-in closet
- Open kitchen
- Furnished
- Bright/sunny

#### EQUIPMENT

- Fitted kitchen
- Microwave
- Shower
- Ceramic glass cooktop
- Fridge

#### CONDITION

- New

#### ORIENTATION

- South

#### EXPOSURE

- Favourable



VIEW

- Lake

- Alps

STYLE

- Modern

## PICTURE(S)





## INTERIOR VIEW



## EXTERIOR VIEW

