



## LUXURY FURNISHED STUDIOS FOR RENT IN FRONT OF EPFL

Route Cantonale 19 | 1025 St-Sulpice VD | Reference : 3150 -

**CHF 2,120.-/month + ch.**

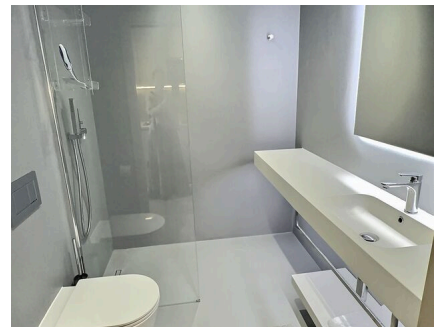


## TABLE OF CONTENTS

Description page	3
Page location and distances	5
Detailed characteristics and conveniences	6
Big pictures	8

# LUXURY FURNISHED STUDIOS FOR RENT IN FRONT OF EPFL

CH-1025 St-Sulpice VD | Route Cantonale 19 | **CHF 2,120.-/month + ch.**



We offer several furnished studios for rent, located in a new, contemporary and high-quality residential building, directly opposite the EPFL.

The building is private, secure and free of nuisances, offering a quiet and well-maintained living environment with a clear view of the lake. Its location is ideal: immediate access to public transport, and only 100 meters from the lake, beaches and sports fields.

Each studio is composed of a bedroom with a double bed, a desk/dining area, storage cupboards, a TV, an equipped kitchenette and a shower room in Corian resin and stone. Most studios have a balcony. A cellar and a mailbox complete the offer.

Bed linen, bath towels and kitchen utensils are provided. Access to the accommodation is by badge or mobile phone.

The underfloor heating, which can be individually controlled, is active in winter, while a ground cooling system by free-cooling ensures summer comfort. Each studio is equipped with an independent double-flow ventilation system.

The monthly charges package is comprehensive: it includes electricity, hot water, heating, an individual high-speed Wi-Fi connection, as well as a TV subscription.

A laundry room is available in the building.

Parking spaces can be rented on request. Cleaning service available on

## CHARACTERISTICS

Reference: **3150 -**

Type: **Apartment**

Availability: **To agree**

room: **1**

Bedroom: **1**

Bathroom: **1**

Charges: **CHF 230.-/month (Not included)**

Parking spaces: **Yes, optional**









request. Some 2-room furnished apartments are also available on request.

The monthly rent is CHF 2'120.-, with a monthly charges package of CHF 230.-.  
Total rent = 2'350.- /month.

## LOCATION

CH-1025 St-Sulpice VD | Route Cantonale 19 | **CHF 2,120.-/month + ch.**



				
Public transports	51 m	1 min.	1 min.	3 min.
Secondary II school	273 m	6 min.	6 min.	3 min.

## CHARACTERISTICS

CH-1025 St-Sulpice VD | Route Cantonale 19 | **CHF 2,120.-/month + ch.**

### CHARACTERISTICS

Availability	<b>To agree</b>	Bathroom	<b>1</b>
Type	<b>Apartment</b>	Charges	<b>CHF 230.-/month (Not included)</b>
Reference	<b>3150 -</b>	Condition of the property	<b>New</b>
room	<b>1</b>	Standing	<b>Upmarket</b>
Bedroom	<b>1</b>	Parking spaces	<b>Yes, optional</b>

### CONVENIENCES

#### NEIGHBOURHOOD

- Villa area
- Green
- Lake
- Marina
- Shops/Stores
- Restaurant(s)
- Subway
- Highway entrance/exit
- College / University
- International schools
- Sports centre
- Bike trail

#### OUTSIDE CONVENIENCES

- Quiet

#### INSIDE CONVENIENCES

- Lift/elevator
- Underground car park
- Open kitchen
- Private bathroom
- Cellar
- Furnished
- Connected thermostat
- Triple glazing
- Bright/sunny

#### EQUIPMENT

- Kitchenette
- Cooker/stove
- Induction cooker
- Microwave
- Fridge
- Freezer
- Laundry
- Shower
- Cable/TV
- Internet connection
- Optic fiber
- Code door
- Oversee camera
- Caretaker
- Home automation

#### CONDITION

- As new



#### ORIENTATION

- South
- West

#### EXPOSURE

- Optimal
- All day

#### VIEW

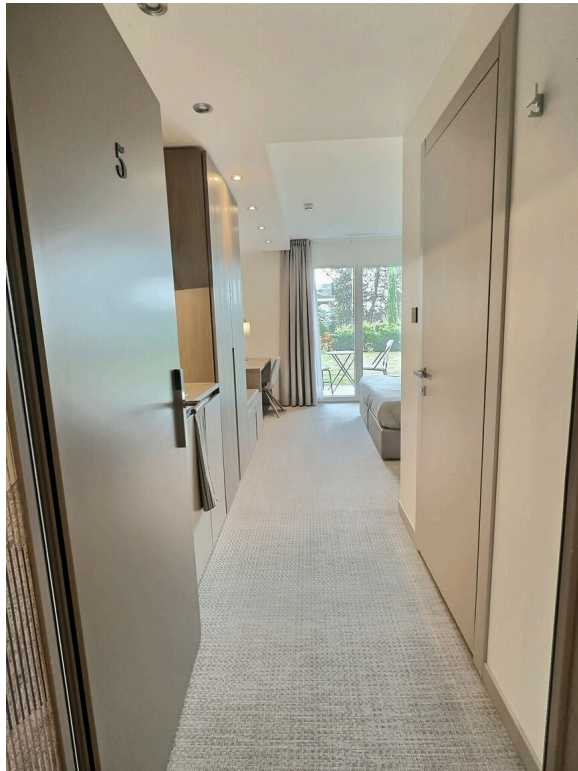
- Nice view
- Unobstructed
- Mountains

#### STYLE

- Modern

## INTERIOR VIEW





## EXTERIOR VIEW





## PICTURE(S)

