



MODERN 2.5-ROOM APARTMENT ON THE LOWER GROUND FLOOR

Chemin de Champagne 2 Bis | 1025 St-Sulpice VD | Reference : 3140-M2

CHF 2,382.-/month + ch.

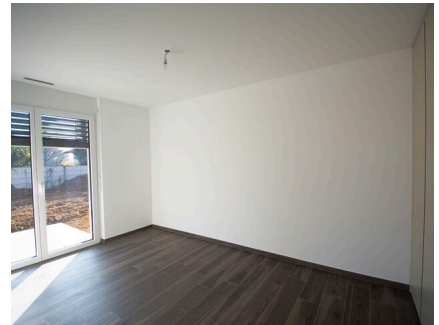


TABLE OF CONTENTS

Description page	3
Page location and distances	4
Detailed characteristics and conveniences	5
Big pictures	7

MODERN 2.5-ROOM APARTMENT ON THE LOWER GROUND FLOOR

CH-1025 St-Sulpice VD | Chemin de Champagne 2 Bis | **CHF 2,382.-/month + ch.**



Located close to the university and the EPFL, this apartment is composed as follows:

- A kitchen open to the living room
- A bedroom with built-in cupboards
- A bathroom
- A terrace
- A

cellar An indoor parking space completes this property.

Net rent: CHF 2,382.-/ month

Heating and hot water package: CHF 180.-/ month

Indoor parking space: CHF 200.-/ month

Available from October 1, 2026.

CHARACTERISTICS

Reference: **3140-M2**

Type: **Apartment**

Availability: **01.10.2026**

Rooms: **2.5**

Bedroom: **1**

Bathroom: **1**

Location floor: **Lower ground floor**

Charges: **CHF 180.-/month (Fixed rate)**

Parking spaces: **Yes, obligatory**

CONTACT FOR VISITING

E-mail : info@segurimmo.ch





Tel. : 021/311.53.23



LOCATION

CH-1025 St-Sulpice VD | Chemin de Champagne 2 Bis | **CHF 2,382.-/month + ch.**



				
Public transports	89 m	2 min.	2 min.	3 min.
Secondary II school	313 m	7 min.	7 min.	3 min.

CHARACTERISTICS

CH-1025 St-Sulpice VD | Chemin de Champagne 2 Bis | **CHF 2,382.-/month + ch.**

CHARACTERISTICS

Availability	01.10.2026	Location floor	Lower ground floor
Type	Apartment	Charges	CHF 180.-/month (Fixed rate)
Reference	3140-M2	Condition of the property	Very good
Rooms	2.5	Parking spaces	Yes, obligatory
Bedroom	1	Interior parking	1 CHF 200.-
Bathroom	1		

CONVENIENCES

NEIGHBOURHOOD

- Village
- Villa area
- Lake
- Shops/Stores
- Bus stop
- College / University
- International schools

OUTSIDE CONVENIENCES

- Terrace/s

INSIDE CONVENIENCES

- Lift/elevator
- Underground car park
- Open kitchen
- Private bathroom

EQUIPMENT

- Furnished kitchen
- Cooker/stove
- Oven
- Dishwasher
- Laundry
- Bath

FLOOR

- Parquet floor

CONDITION

- As new



STYLE

- Modern

PICTURE(S)





