



## **LUXURIOUS 2.5-ROOM APARTMENT ON THE 1ST FLOOR. HIGH-END FINISHES.**

Chemin de Champagne 2Bis | 1025 St-Sulpice VD | Reference : 3140/13

**CHF 2,356.-/month + ch.**

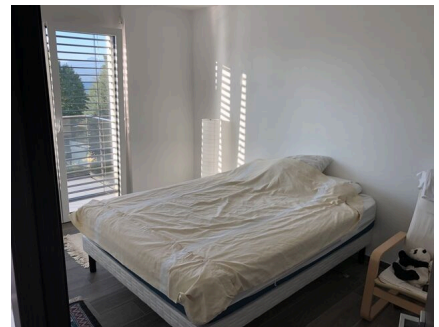


## TABLE OF CONTENTS

Description page	3
Page location and distances	4
Detailed characteristics and conveniences	5
Big pictures	7

## LUXURIOUS 2.5-ROOM APARTMENT ON THE 1ST FLOOR. HIGH-END FINISHES.

CH-1025 St-Sulpice VD | Chemin de Champagne 2Bis | **CHF 2,356.-/month + ch.**



The apartment is composed as follows:

Beautifully arranged open kitchen leading to a large, bright living room with a wonderful glass balcony, bedroom with built-in wardrobes, bathroom with bathtub and an indoor parking space complete this property.

Net rent: CHF 2,356.- / month  
Utilities: CHF 180.- / month Indoor parking space: CHF 200.- / month

Available by agreement

### CONTACT FOR VISITING

E-mail : [info@segurimmo.ch](mailto:info@segurimmo.ch)  
Tel. : 021/311.53.23

### CHARACTERISTICS

Reference: **3140/13**

Type: **Apartment**

Availability: **To agree**

Rooms: **2.5**

Bedroom: **1**

Bathroom: **1**

Location floor: **1st floor**

Charges: **CHF 180.-/month (Not included)**

Year of construction: **2018**





Parking spaces: **Yes, obligatory**



## LOCATION

CH-1025 St-Sulpice VD | Chemin de Champagne 2Bis | **CHF 2,356.-/month + ch.**



				
Public transports	172 m	3 min.	3 min.	3 min.
Primary school	564 m	9 min.	7 min.	5 min.
Secondary II school	638 m	12 min.	9 min.	5 min.
Stores	888 m	23 min.	18 min.	7 min.

## CHARACTERISTICS

CH-1025 St-Sulpice VD | Chemin de Champagne 2Bis | **CHF 2,356.-/month + ch.**

### CHARACTERISTICS

Availability	<b>To agree</b>	Location floor	<b>1st floor</b>
Type	<b>Apartment</b>	Charges	<b>CHF 180.-/month (Not included)</b>
Reference	<b>3140/13</b>	Year of construction	<b>2018</b>
Rooms	<b>2.5</b>	Parking spaces	<b>Yes, obligatory</b>
Bedroom	<b>1</b>	Interior parking	<b>1 not included   CHF 200.-</b>
Bathroom	<b>1</b>		

### CONVENIENCES

#### NEIGHBOURHOOD

- Green
- Lake
- Bus stop
- Highway entrance/exit

#### OUTSIDE CONVENIENCES

- Balcony/ies
- Parking

#### INSIDE CONVENIENCES

- Lift/elevator
- Open kitchen
- Built-in closet
- Underground car park
- Cellar
- Bright/sunny

#### EQUIPMENT

- Furnished kitchen
- Fridge
- Laundry
- Ceramic glass cooktop
- Dishwasher
- Bath
- Oven

#### EXPOSURE

- Optimal
- All day

#### VIEW

- Clear
- Lake
- Mountains



## STYLE

- Modern

## PICTURE(S)



