



## **BEAUTIFUL NEW FURNISHED 2-ROOM APARTMENT IN A HIGH-END BUILDING NEAR THE LAKE**

Route Cantonale 19 | 1025 St-Sulpice VD | Reference : 3150/suite

**CHF 3,000.-/month, incl. ch.**

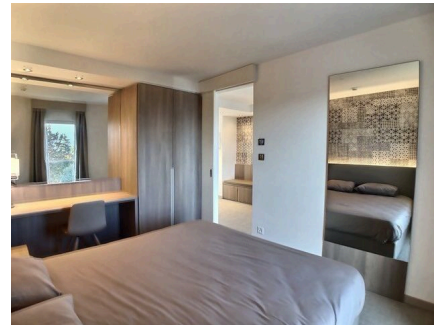


## TABLE OF CONTENTS

Description page	3
Page location and distances	4
Detailed characteristics and conveniences	5
Big pictures	6

## BEAUTIFUL NEW FURNISHED 2-ROOM APARTMENT IN A HIGH-END BUILDING NEAR THE LAKE

CH-1025 St-Sulpice VD | Route Cantonale 19 | **CHF 3,000.-/month, incl. ch.**



This fully furnished apartment consists of an entrance hall, a separate kitchen, built-in wardrobes, a study with sofa, a bedroom and 1 shower/WC. Access via smartphone and all-inclusive charges (hot water, electricity, TV and WIFI subscriptions included).

An outdoor parking space for CHF 120.00 or an indoor parking space for CHF 200.00 can be added to this property.

Rent including charges: CHF

3,500.-/month Available immediately or by arrangement.

### CHARACTERISTICS

Reference: **3150/suite**

Type: **Apartment**

Availability: **To agree**

Rooms: **2**

Bedroom: **1**

Bathrooms: **2**

Parking spaces: **Yes, optional**

### CONTACT FOR VISITING

E-mail : [info@segurimmo.ch](mailto:info@segurimmo.ch)





Tel. : 021/311.53.23



## LOCATION

CH-1025 St-Sulpice VD | Route Cantonale 19 | **CHF 3,000.-/month, incl. ch.**



				
Secondary II school	10 m	7 min.	7 min.	4 min.
Stores	830 m	16 min.	12 min.	6 min.

## CHARACTERISTICS

CH-1025 St-Sulpice VD | Route Cantonale 19 | **CHF 3,000.-/month, incl. ch.**

### CHARACTERISTICS

Availability	<b>To agree</b>	Bedroom	<b>1</b>
Type	<b>Apartment</b>	Bathrooms	<b>2</b>
Reference	<b>3150/suite</b>	Parking spaces	<b>Yes, optional</b>
Rooms	<b>2</b>		

### CONVENIENCES

#### NEIGHBOURHOOD

- Lake
- Bus stop
- College / University

#### INSIDE CONVENIENCES

- Lift/elevator
- Cellar
- Built-in closet
- Private bathroom
- Furnished

#### EQUIPMENT

- Fitted kitchen
- Microwave
- Shower
- Ceramic glass cooktop
- Fridge

#### CONDITION

- New

#### EXPOSURE

- Favourable

#### VIEW

- Lake
- Alps

## PICTURE(S)









